

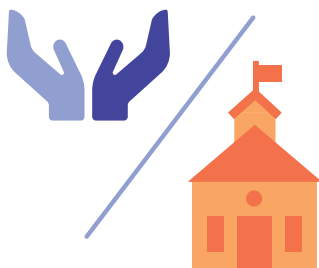
Improving Outcomes for Children in Vancouver, WA

The Clark County Public Health Department serves as a convener, an advocate and a data expert to strengthen partnerships in Vancouver, Wash., including with the Vancouver Public School District.

1 After studying the statistics and talking with the community, the Clark County Public Health Department in Washington state began approaching child health in new ways. Today, it applies its expertise, connections, and data to support partners working with high-risk young people in the city of Vancouver.



3 The public health department helped to bridge two sectors – schools and faith-based organizations – that have overlapping concerns and complementary capacities. The school district saw faith-based organizations as potentially valuable new partners and faith-based leaders wanted to make their contribution through schools. Both parties had to respect a fundamental principle: separation of church and state.



2 In a community where more than half of students qualify for free or reduced-price lunch, school-based resource centers involve more than 60 local partners, including the public health department, to provide ancillary supports – from weekend food backpacks, clothing, and school supplies, to after-school programs and mental health services, to parenting workshops, transportation and housing assistance.



4 The power of established relationships in Vancouver was on full display during an eviction crisis that threatened low-income families. Building on that experience, public health served as a strategist and advocate for the “Bring Vancouver Home” campaign, which



helped persuade voters to support a \$42 million, seven-year property tax levy to provide or preserve affordable housing.

“ When children graduate from high school, they are more likely to have greater access to health care, better access to healthier neighborhoods and a greater ability to make educated decisions about their health.”

Tamara Shoup, Vancouver Public Schools